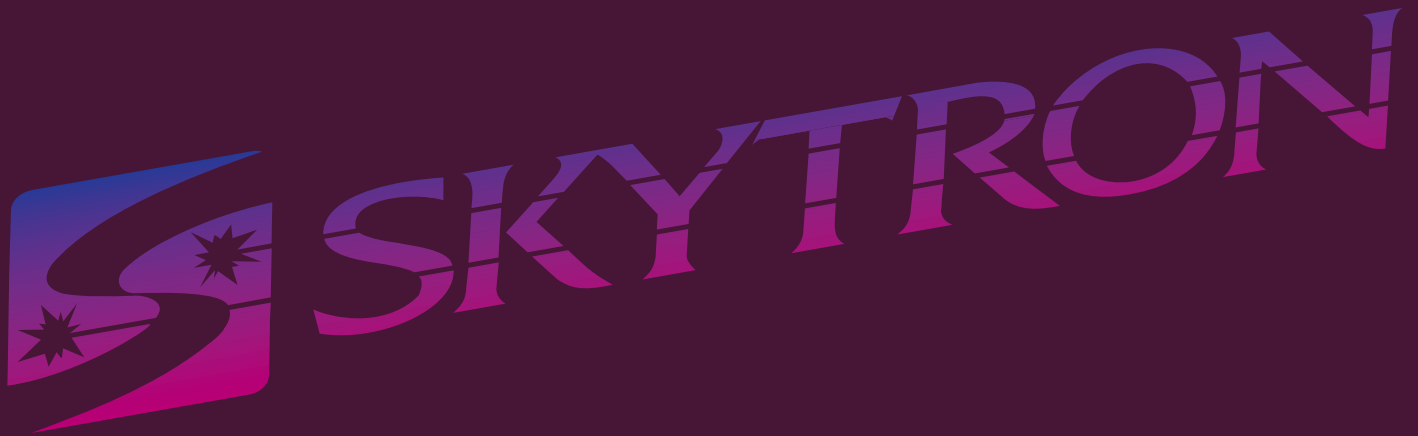


Full Line Lighting Guide



The Choice That's Always Right For You!

Putting Your Lighting Needs First



Skytron Excel Series Focusable Lighting, 1972

Skytron introduced our first surgical light in 1972 and quickly became the market leading supplier of quality lighting systems in the United States. We have continued to expand and grow our menu of quality lighting systems to meet today's most demanding clinical needs in every patient care area. Skytron's advanced, focusable lighting systems provide high-tech, high intensity lighting, with leadership recognized across North America for quality, innovation, ease of use, reliability and durability.



Stellar Series Focusable Lighting with fully integrated O.R. of the 21st Century

Lighting System Leadership for the 21st Century

Skytron high performance lighting systems provide high intensity and cool illumination without glare, while significantly reducing eye fatigue. Our quality lighting systems are noted for their innovation, featherlight maneuverability and ongoing durability, including the ability to retain maximum intensity over greater working distances. *Optional* Voice and/or Touchscreen Activation Lighting Systems are also available on select models.



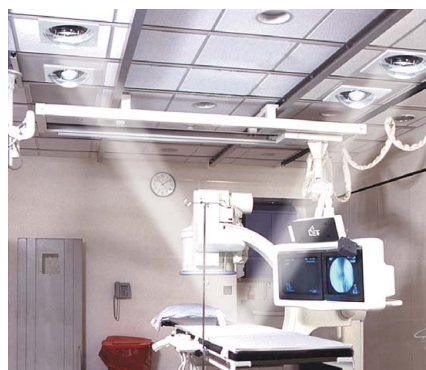
Focusable Lighting



Fixed Focus Lighting



Outpatient Surgery, Emergency & Procedure Lighting



Cath Lab



Exam Lighting



LDRP & ICU

Applications include:

- General Surgery
- Orthopedic Surgery
- Cardiovascular Surgery
- Neurosurgery
- Trauma Surgery
- Plastic Surgery
- ENT Surgery
- Vascular Surgery
- Urology
- Labor & Delivery
- Cardiac Cath Labs
- GI Labs
- C-Section Rooms
- EP Labs
- Intensive Care Units



Optional TV-II Handle Camera System

Stellar *Focusable* Lighting Leadership Since 1972



Since introducing our first Surgical Light in 1972, Skytron has been the #1 provider of focusable surgical lighting systems. Stellar Surgical Lighting design is truly revolutionary, combining shadow-free, focusable optics together with advanced, 21st Century Polymer Construction. Now also available with Voice or Touchscreen Control.

Advanced Polymer Lighthead Construction

- Provides extreme durability and featherlight maneuverability
- Single yoke design permits effortless, precise positioning

Brighter

- Soft white, high intensity lighting of 130,600 lux (12,000 fc) per ST23 lighthead or 160,000 lux (15,000 fc) per ST29 lighthead
- Sterilizable center focus and positioning handle
- Two non-sterile positioning handles

Cool

- Revolutionary coated reflectors & heat conducting alloys reflect infrared heat to rear and out the back of lighthead

Advanced Optics

- Advanced VSRD (Vertically Segments Reflector Design) Optics provide the optimum balance between bright lighting and cool illumination

Color Correct Light

- Optimum color correction of 4,000 K
- Color Rendering Index (CRI) of 93 provides excellent tissue differentiation, while significantly reducing glare & eye fatigue

Stellar's *Focusable* Optics Retain Maximum Intensity at Any Distance

Precise and Efficient Lighting Control

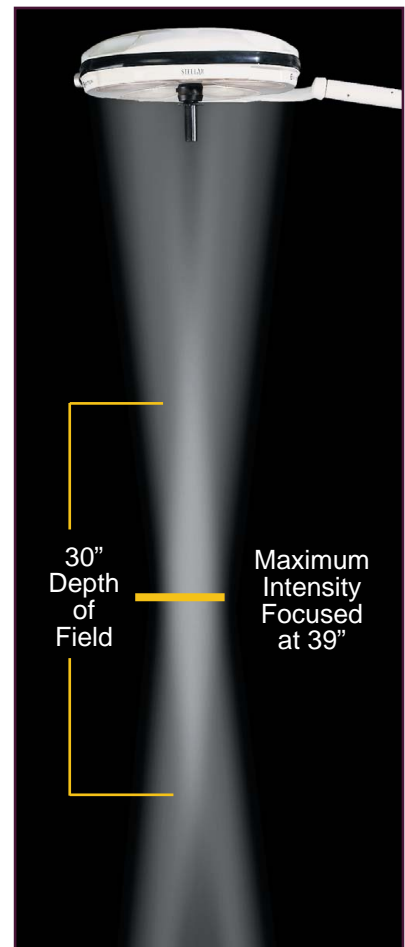
Focusable lighting has long been the Skytron benchmark for lighting system design, uniquely providing precise focusable lighting control, while retaining maximum intensity over a greater range of working distances. Multiple light sources culminate together to produce a shadow-free, high intensity and focusable column of light which provides a uniform 30" depth of field at any distance, for every procedure.



Stellar Lighthouse focused at 30".



Stellar Lighthouse focused at 60".



Stellar Lighthouse focused at 39" (1 meter) with a uniform 30" depth of field.

Extended working distances (beyond 1 meter) are not uncommon for many surgical procedures (Ob-Gyn, Orthopedics, Cardiovascular and Urology). Stellar provides focusable lighting control which produces a uniform 30" depth of field, covering a greater range of working distances (up to 60" and beyond).

Streamlined Maneuverability and Durability

Featherlight Maneuverability and Durability

- Advanced polymer construction
- Extreme durability
- Featherlight maneuverability
- 360° radial arm and surgical lighthead rotation
- 360° pitch, roll and rotational axis
- 20° upward travel for taller surgeons
- 90° downward travel for low angle lighting

Ongoing Reserve Bulb Protection

- Bulb life is generally 5X competitive systems, protected by Skytron's Sof-Start System
- Multi-light source design protects against surgical interruption during bulb failure



Enhanced Maneuverability Features with Increased Ranges of Movement



Bulb Change is quick and easily made at users' convenience

Wall Controls (Standard or Touchscreen Activated)

- Compact, aesthetically pleasing
- Convenient to operate
- Meets UL and CSA testing standards

Stellar Standard Wall Control (Rheostat Dial)



Stellar Voice or Touchscreen Integration Wall Control (Digital Touchpad)



Lighting Configurations

*Camera systems are available with all lighting configurations



Model ST23
Single Radial Arm and Surgical Lighthead
Size: 23" (60cm) Lighthead
Intensity: 130,000 lux (12,000 fc)



Model ST29
Single Radial Arm and Surgical Lighthead
Size: 29" (74cm) Lighthead
Intensity: 160,000 lux (15,000 fc)



Model ST2323
Dual Radial Arms and Surgical Lightheads
Size: 23" (60cm) Lightheads
Intensity: 260,000 lux (24,000 fc)



Model ST2923
Dual Radial Arms and Surgical Lightheads
Size: 29" (74cm) and 23" (60cm) Lightheads
Intensity: 290,000 lux (27,000 fc)



Model ST232323
Triple Radial Arms and Surgical Lightheads
Size: 23" (60cm) Lightheads
Intensity: 390,000 lux (36,000 fc)



Model ST292323
Triple Radial Arms and Surgical Lightheads
Size: 29" (74cm) and 23" (60cm) Lightheads
Intensity: 420,000 lux (39,000 fc)

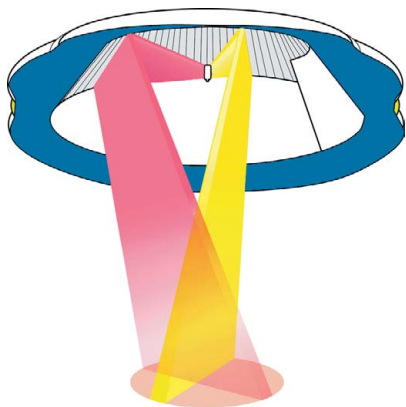
The Next Generation in Single Bulb Technology



Skytron's Millennium Gold O.R. Lights bring enhanced optics with extended depth of field to single bulb lighting design. Covering a full 54" usable range, Millennium Gold produces brilliant illumination to the surgical field with no harsh shadows. An adjustable pattern of light remains in focus for a greater range of working distances.

Advanced Optics & Reflector Design

The heart of Millennium Gold's remarkable performance lies within its advanced VSRD optical system. Over 144 individual overlapping light segments or "slices of light" fuse to produce a brilliant 54" extended pattern of usable light while greatly reducing shadows.



Shadow Free Illumination

VSRD individual light segments overlap to eliminate harsh shadows, providing superior shadow control. Excellent shadow control enhances tissue identification at the surgical site without loss of depth perception, even for the deepest of cavities.



Deeper, Extended Pattern Control

Millennium Gold's VSRD optics make it unnecessary to reposition the surgical light for deep wound illumination, or when changing table height, while retaining a uniform pattern through an extended 54" column of light with no "hot spots".

Contemporary Styling, Smooth Performance

Employing contemporary styling, Millennium Gold features rugged construction and a durable polymer coating process to stand up to years of clinical use. A sealed lighthead protects against dust accumulation and provides smooth lines for quick and easy cleaning between surgical cases.

Automatic Reserve Bulb

Automatic switching to reserve bulb precludes a loss of light should bulb failure occur.



- Bulb changes can quickly be made later, without tools
- Bulb life is 1,000 hours protected by Skytron's Sof-Start System



Model ML24*

Single Radial Arm and Surgical Lighthead

Size: 24" (60cm) Lighthead
Intensity: 120,000 lux (11,000 fc)



Model ML2424*

Dual Radial Arms and Surgical Lightheads

Size: 24" (60cm) Lighthead
Intensity: 240,000 lux (22,000 fc)



Model ML242424*

Triple Radial Arms and Surgical Lightheads

Size: 24" (60cm) Lighthead
Intensity: 360,000 lux (33,000 fc)



* Camera systems are available with all lighting configurations



Millennium Gold's wall control features On/Off and intensity adjustments along with reserve bulb indicator lights to remind OR staff to replace bulb.

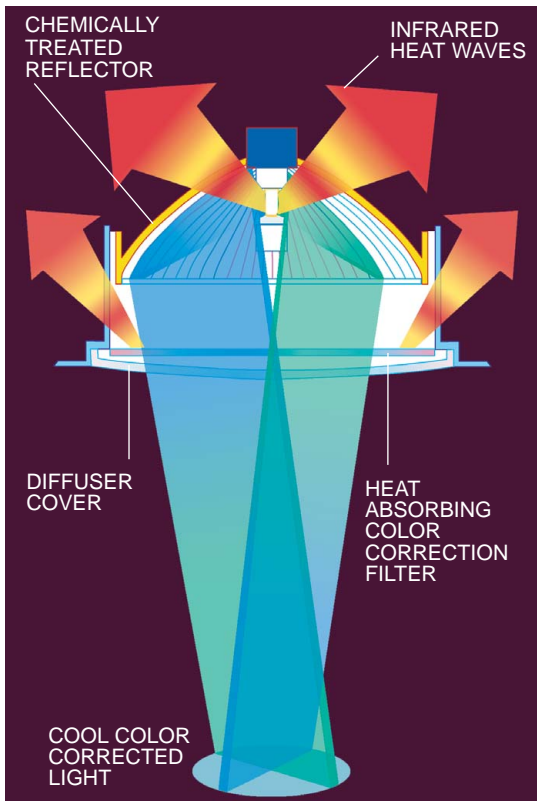
Outpatient Surgery, Emergency & Procedure Lighting



The Stellar ST1919 Series high performance and extremely durable polymer lighthead provide high intensity, soft white lighting when and where it is needed most, with effortless movement. Sealed lighthead and smooth lines protect against dust accumulation, providing quick and easy cleanings between patient cases.

Stellar's VSRD Optical System

At the heart of Stellar's high performance optics are multiple light sources. 176 slices of light are produced from each individual light source, each combining to form a column of cool, soft white and shadow-free illumination to the patient site.



Fully Integrated Outpatient O.R. with Stellar ST1919 Lights



Emergency Trauma Room with Stellar ST1919 Lights

Advanced Optics, Featherlight Maneuverability & Durability



ST19 Single Light System



ST1919 Dual Light System

ST1919 & ST19 Lighting Systems are optionally available with separate wall control for intensity & on/off functions. Specify ST1919WC or ST19WC.



Enhanced maneuverability features with increased ranges of movement.

Advanced Optics, Cool Illumination

- Advanced optics provide optimum balance between bright lighting and cool illumination
- Revolutionary coated reflectors & heat conducting alloys reflect infrared heat to rear and out the back of lighthead

Brighter

- Soft white, high intensity lighting of 193,600 lux (18,000 fc)
- Sterilizable positioning handle
- Two non-sterile positioning handles

Color Correct Light

- Optimum color correction of 4,000 K
- Color Rendering Index (CRI) of 93 provides excellent tissue differentiation, while significantly reducing glare & eye fatigue

Featherlight Maneuverability & Durability

- Tri-shaped polymer lighthead construction permits precision positioning of lightheads, extreme durability and featherlight maneuverability

Bulb Change, Ongoing Reserve Bulb Protection

- Bulb life is generally 5X competitive systems, protected by Skytron's Sof-Start System
- Multi-light source design protects against lighting interruption during bulb failure



Bulb change is quick and easily made at users' convenience.

Patient Exam Lighting



ST9 Wall Mount

Stellar Exam Light (ST9)

- High Intensity Lighting of 60,200 lux (5,600 fc)
- Soft White Anti-glare Optics
- Radically Durable, Featherlight Maneuverability
- Advanced Polymer Construction
- Excellent Reach
- Available as Ceiling Mount, Wall Mount or Portable Stand



ST9 Stand Light

Stellar Exam Light (ST9S)

- Provides portable, high quality lighting for Labor & Delivery Rooms, Emergency Departments, GI Labs and Intensive Care Units

Stellar Exam Light (STX1)

- High Intensity Lighting of 46,000 lux (4,300 fc)
- Soft White Anti-glare Optics
- Featherlight Maneuverability
- Excellent Reach
- Available as Ceiling Mount Only



STX1 Ceiling Mount

The Most Widely Used Birthing Light, Recessed Ceiling Exam Lighting

Skytron Mini Argos

The Skytron Mini-Argos System is the most widely used birthing room light in America. With literally thousands of lights in use, the HA60AR-WC is definitely the lighting system of choice for LDR and LDRP applications, as well as ER and ICU Departments.

Mini-Argos Lighting features include:

- An Attractive, Homey Atmosphere
- Surgical Quality Illumination
- Exclusive Strobe-Guided Lighting Control providing a "Light in Your Hand"
- Instant Practitioner Target Accuracy via Remote Control Wand
- Up to 70,000 lux (6,500 fc) from Two (2) Overlapping Light Sources
- High Quality, High Intensity Lighting for repair of Vaginal Tears & Episiotomies
- Wide Angle Reflector Design
- Equipped with Standard Wall Control (WC) for Intensity Adjustment and Auxiliary Touchpad Directional Controls



Birthing Room with Mini-Argos Series Lighting



Remote, Strobe Guided Wand with Charging Base



HA60AR-WC Wall Control features Intensity Adjustment and Auxiliary Touchpad Directional Controls



Emergency Room with Mini-Argos Series Lighting

Alternative Recessed Lighting

Excel Series

The Excel Series Lighting System can be used as a lower-cost alternative to the Mini Argos. The Dual Excel System provides excellent illumination for Birthing Rooms, ER and ICU applications, providing an infinite range of Intensity Settings via a Wall Intensity Control, combination A/B Toggle Switch and Joy Stick Control for movement of each Lighthead.

- Surgical quality illumination up to 86,000 lux (8,000 fc) without glare, from two (2) overlapping light sources
- Excellent lighting control provided user "Line-of-Site" is maintained with respect to Wall Control and lightheads for light beam positioning

Excel Series Wall Control featuring On/Off and Intensity Controls, Combination A/B Toggle Switch with Joy Stick Controller



Birthing Room with Excel Series Lighting

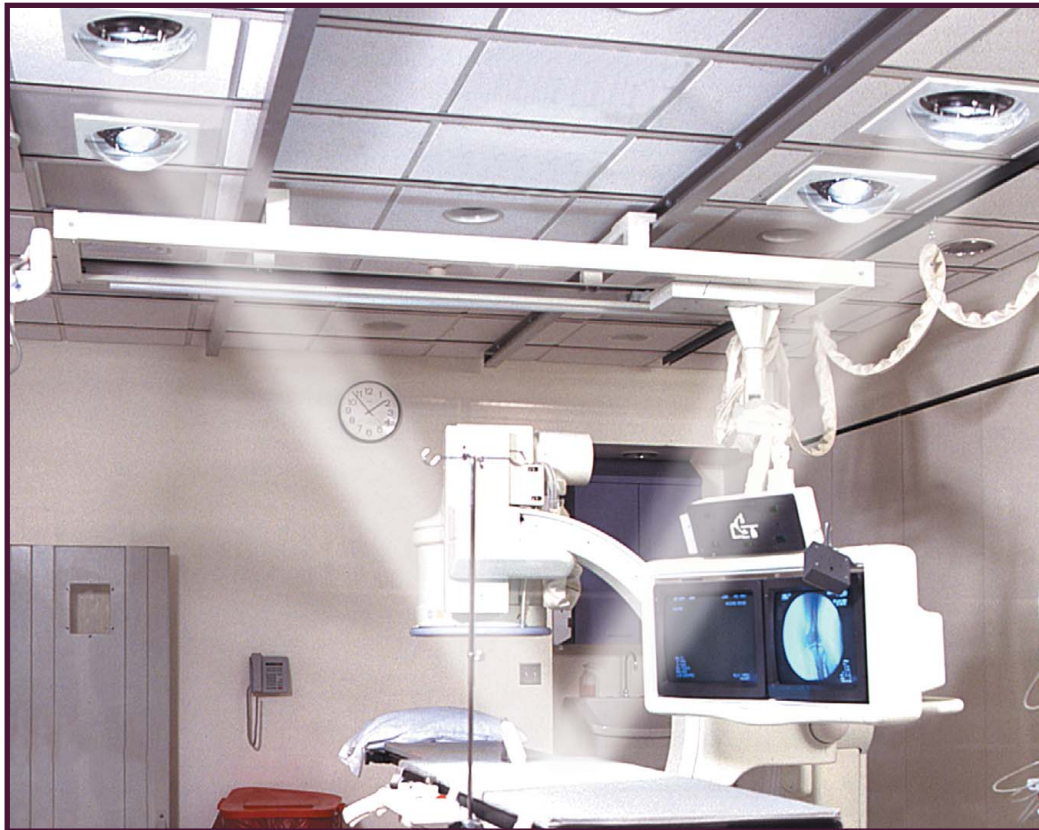


ICU with Excel Series Lighting

- Powered Adjustable Wall Control Lighting
- High Intensity of 43,000 lux (4,000 fc) per lighthead
- Wall Control provides Main Power, Intensity Adjustments and Joy Stick Control for lateral and longitudinal positioning

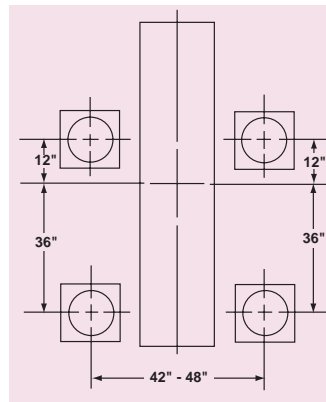
Powered Recessed Lighting Leadership for Cardiac Cath Labs

The HA60AR-WC Mini Argos Lighting System is The Ideal Choice for Cardiac Cath Labs, providing Quality, High Intensity Lighting where traditional lighting systems cannot go.



Remote, Strobe Guided Wand with Charging Base

- Recessed, Power Adjustable Lighting System
- Exclusive Strobe-Guided Remote Control Wand
- Instant Practitioner Target Accuracy
- 35,000 lux per lighthouse (4 lights recommended) provide up to (13,000 fc) of Intensity
- Optional Wall Control(s) permit individual positioning of each lighthouse and Uniform Intensity Adjustments



Recommended Cath Lab Application



Intensity and Multi-Directional Positioning Wall Control (1 Wall Control for 2 Lighthouses)

Working Together as Partners

Skytron Customer Service Leadership

At every level, Skytron's Management Team brings years of sales and previous clinical experience to understanding customer needs, including former Registered Nurses, Operating Room Managers, Surgical Assistants and Central Service Reprocessing Managers.

Skytron continually dedicates itself to providing innovative product solutions and the clinical support our customers need to keep their facilities operating efficiently. Our corporate credo, "Customer Service First, Everything Else Will Follow" is based upon years of successful customer service leadership in the healthcare marketplace.



Skytron Sales Management Team

- Over 30 year History of Product Leadership in Healthcare Market
- 120 Sales Representatives
- 100 Service Representatives
- Available 24-Hour Service Network
- Custom Accessories/Product Modifications
- Alternate Financing Programs
- National Accounts Program
- Clinically Experienced Management Team
- Available Test Jig Mounting Requirement Validation
- Auto CAD Support Assistance
- Project Drawings & Coordination
- Consultative Design Planning
- Full Line Planning Guide Support Tools
- Semi-Annual Hospital Biomedical Training
- Advanced Video & Data Integration



Consultative Design Planning and Coordination

While other companies have been sold, changed distribution or simply left the medical equipment business in pursuit of other opportunities, Skytron has remained true to our commitment of "Quality Products and Customer Service First, Everything Else Will Follow". Our corporate philosophy continues to lead us to the most innovative, time-tested and reliable medical equipment available for our customers and the patients they serve.



5000 36th Street SE, Grand Rapids, MI 49512
1-800-SKYTRON (759-8766) Fax: 616-957-5053
E-mail: sales@skytron.us

Local Representative